

STARRY PERGOLA 2.0

GR-9200A



- ✓ Aluminum construction with long service life
- ✓ Maximum load up to 30 kg / m2
- ✓ Easy to build with assembly instructions
- ✓ Integrated roof gutter
- ✓ Aluminum blades
- ✓ White/grey color option

● MANUAL / MOTORIZED



Motorised with light



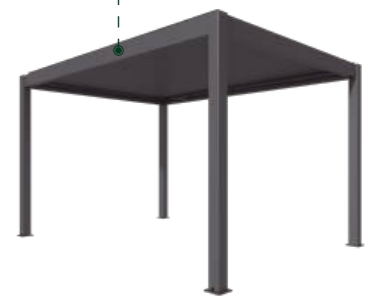
Better heat insulation



Aluminum louver



Professional advanced waterproof IP67 motor, 24V low voltage, more stable and safer.



Starry pergola is a semi-permanent premium aluminum pergola with Aluminum innovative louvres, posts with round corner design, led lighting system to provide a perfect shade for your outdoor area. It is made of high-quality aluminum, which guarantees durability and solidity of the sturcture. Adjustable top blades allow you to choose between sun and shade seating ,Adopt 120mm posts, stable structure with affordable cost, great waterproof effect.

GR-9200A

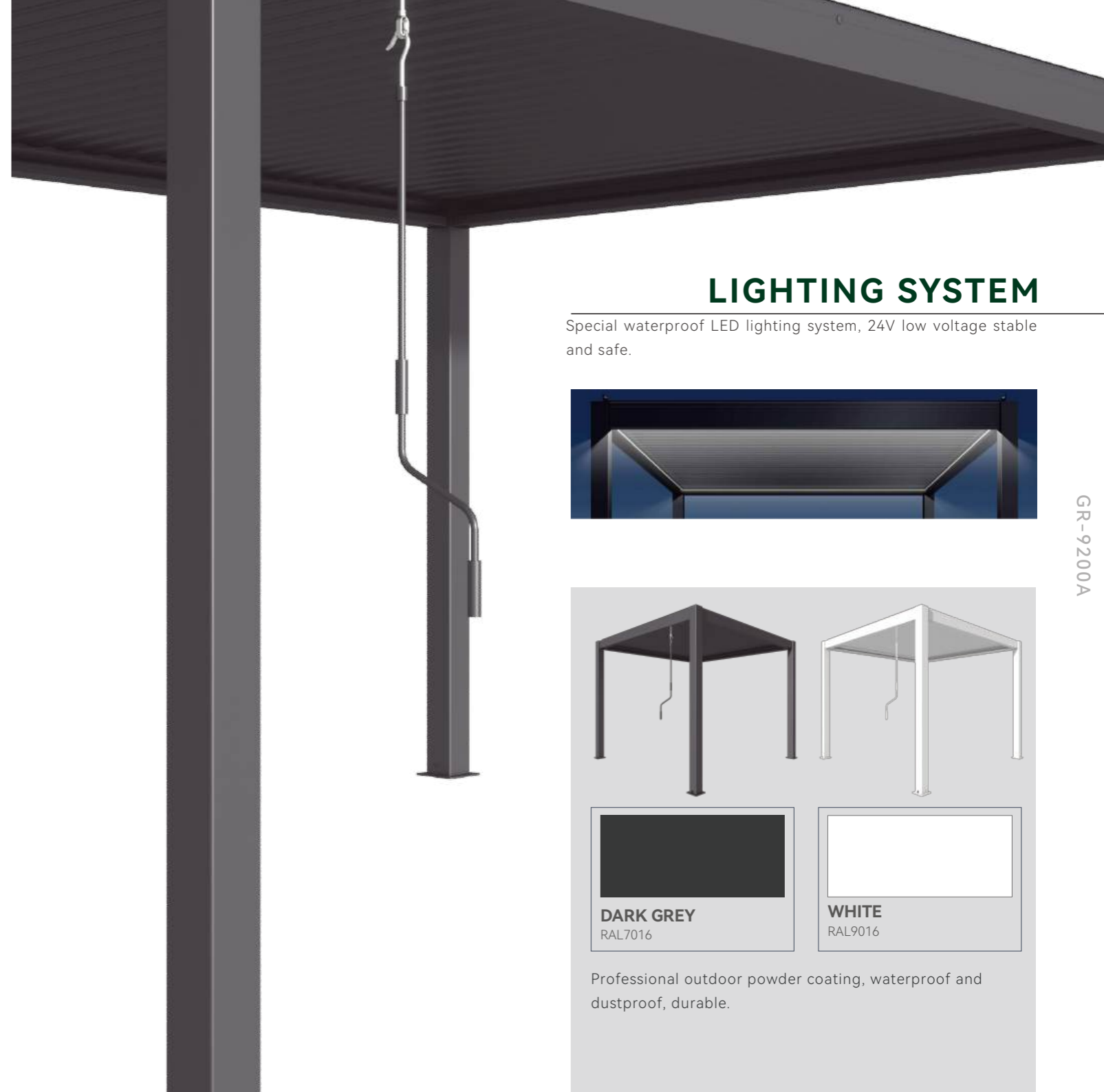
LOUVER SYSTEM

Aluminum waterproof blades, stronger and better.



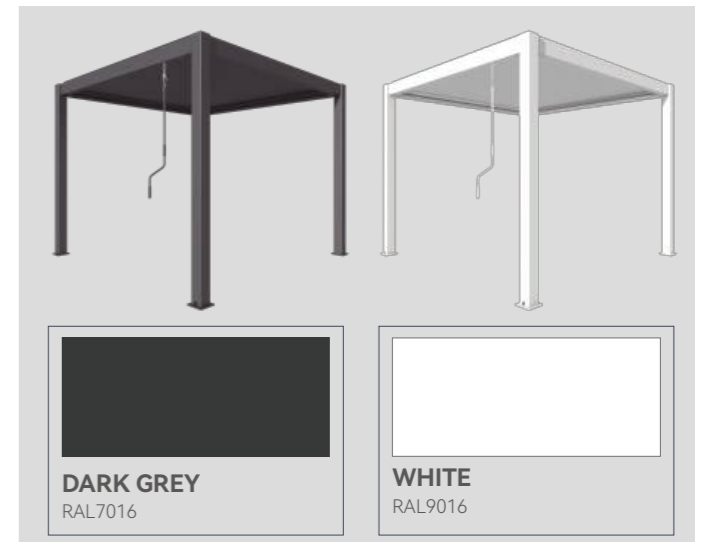
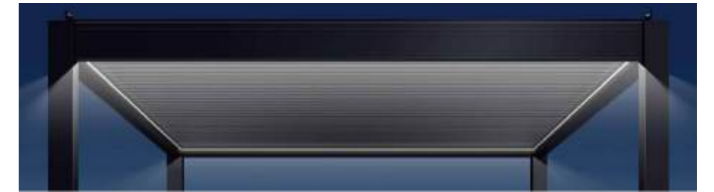
Freedom between the opening and closing, fully show the aesthetics of life.

Post Aluminum 120 x 120 x 1.4 mm	Louver Aluminum 131 x 32 x 1 mm
Main Beam Aluminum 150 x 62 x 1.4 mm (Manual type) Aluminum 170 x 47 x 1.4 mm (Motorized type)	Gutter Aluminum 58 x 56 x 1.5mm (Manual type) Aluminum 58 x 66 x 1.4mm (Motorized type)
Beam Aluminum 150 x 40 x 1.4 mm (Manual type) Aluminum 170 x 25 x 1.4 mm (Motorized type)	Size 3X3 / 3X4 / 4X4 / 6X4 m



LIGHTING SYSTEM

Special waterproof LED lighting system, 24V low voltage stable and safe.

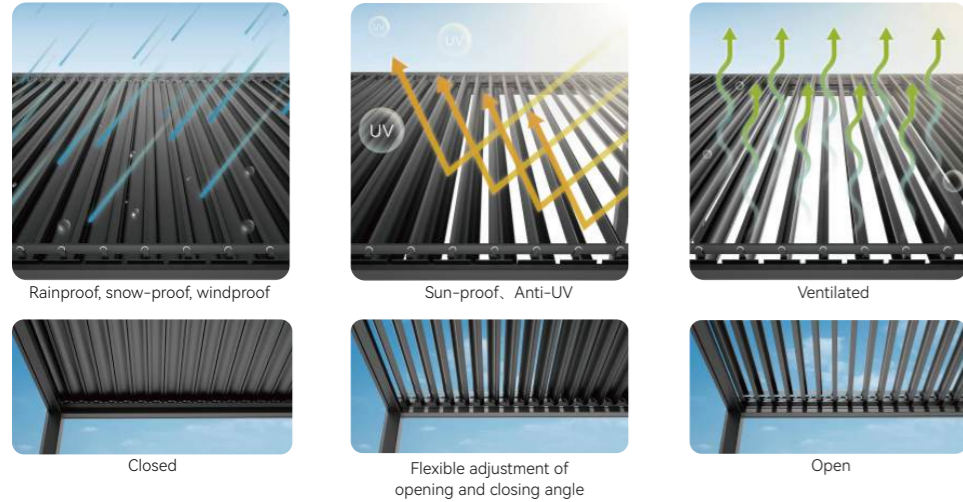


Professional outdoor powder coating, waterproof and dustproof, durable.

FUNCTIONAL FEATURES

Sun-proof, Waterproof, Ventilated

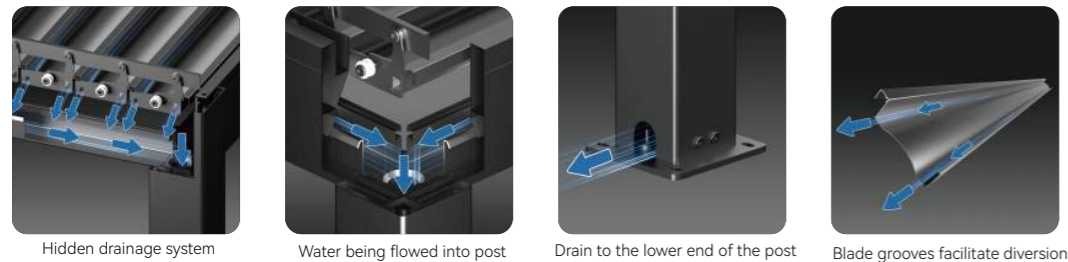
It's adopted a new generation of shading technology, which has a very good function of shading and rain protection. By flexibly adjusting the opening and closing state of the blades, you can also adjust the light and ventilation effects, and choose the best way to start outdoor leisure life. It can withstand wind rating 28m/s (100 km/h).







DRAINAGE SYSTEM

Hidden drainage system, no fear of heavy rain.

Beam and gutter are integrated to achieve a more perfect waterproof function. Rainwater stream through the internal gutter system and to posts of the structure which is a practical and clever solution.



CONTAINER LOADING CAPACITY

Photos	Size	Carton Size (mm)			N.W (Kg)	G.W (Kg)	QTY (CTN)	CTN NO	CBM	Description	20GP	40GP	40HQ
		L	W	H									
	3X3	2900	340	220	36.9	39.2	1	1/4	0.2	Beam+Gutter	29	65	65
		2900	350	310	28.9	32.2	1	2/4	0.3	Louver			
		2900	350	310	27.8	30.1	1	3/4	0.3	Louver			
		2750	300	260	48.5	51.9	1	4/4	0.2	Post			
	3X4	2955	310	160	43.7	46	1	1/4	0.2	Beam+Gutter	18	44	52
		2910	350	410	62.7	66	1	2/4	0.4	Louver			
		2910	350	410	62.7	66	1	3/4	0.4	Louver			
		2750	360	260	55.1	58	1	4/4	0.3	Post			
	4X4	4010	310	300	65.4	73	1	1/6	0.4	Beam+Gutter	14	37	42
		1970	370	395	27	32.8	1	2/6	0.3	Louver			
		1970	370	395	27	32.8	1	3/6	0.3	Louver			
		1970	370	395	27	32.8	1	4/6	0.3	Louver			
		1970	370	395	27	32.8	1	5/6	0.3	Louver			
		2800	330	260	50.6	56	1	6/6	0.2	Post			
	6X4 (Two bay)	4035	440	220	76	81	1	1/6	0.4	Beam+Gutter	10	24	25
		2880	350	405	62.7	66	1	2/6	0.4	Louver			
		2880	350	405	62.7	66	1	3/6	0.4	Louver			
		2880	350	405	62.7	66	1	4/6	0.4	Louver			
		2880	350	405	62.7	66	1	5/6	0.4	Louver			
		2920	415	250	81.7	86	1	6/6	0.3	Post			

GR-9200A